

## NABILA

design Corrado Dotti

WALL/CEILING LAMP Ø12 - Ø16 **552.41** | **552.42**

Struttura realizzata da una base in metallo verniciata a polveri epossidiche e da un dischetto in ottone spazzolato. Vetro sferico in borosilicato a doppia parete Ø12 - Ø16.

Structure made of a metal base coated with epoxy powders and a brushed brass disk. Double wall borosilicate spherical glass Ø12 - Ø16.

## DESCRIPTION and LIGHT SOURCE

**552.41** wall/ceiling

1 x max 18W - G9 220-240V

Ø 12 D. 13 cm

glass Ø 12 cm

net weight: 0,2 kg


CE  IP40**552.42** wall/ceiling


1 x max 18W - G9 220-240V

Ø 16 D. 17 cm

glass Ø 16 cm

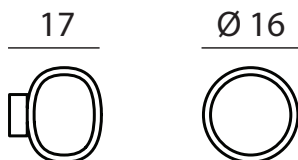
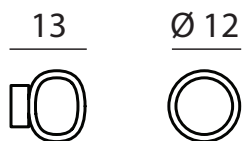
net weight: 0,3 kg

CE  IP40
 **C74** Nero sabbia +  
Sand black

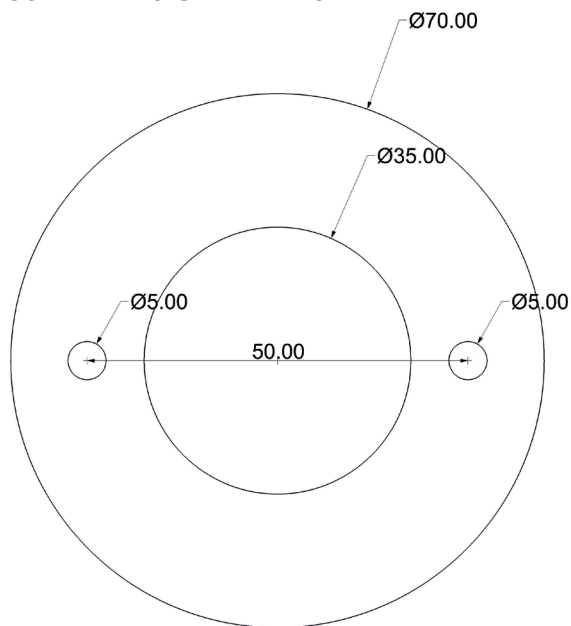
 **C41** Ottone spazzolato  
Brushed brass

---

## DIMENSIONS



## MEASUREMENTS OF THE BASE



---

## SURFACE FINISHES

Verniciatura a polveri poliestere elettrostatica ad alta estetica con spessore di 80 µ cottura in forno a temperatura di 180° per 20 minuti, prova di aderenza: nessun distacco ISO 2409, nebbia salina 300 h 1 mm di penetrazione sulla croce.

Painting with poor high-aesthetic electrostatic polyester with a thickness of 80 µ cooking in the oven at a temperature of 180 for 20 minutes, proof of adherence: no detachment ISO 2409, salt spray 300 h 1 mm penetration on the cross.

---

## CONFORMITY

La ditta Gibas s.r.l. dichiara sotto la propria responsabilità che il prodotto al quale questa dichiarazione si riferisce, è conforme, alle seguenti norme/altri documenti normativi/specifiche: EN 60598-2-1:1989 in unione con EN 60598-1:2015-01 e quindi rispondente ai requisiti essenziali delle direttive 2014/35/UE - 2011/65/UE - 2010/30/UE - 2009/125/CE